

# HOUSE & LAND PACKAGE

## \$396 276.00

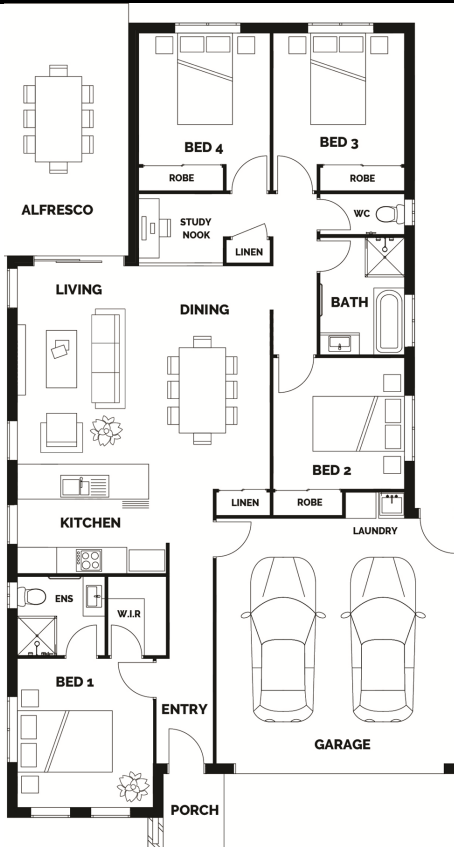


### Archie 177

Lot 277 Irma Crescent

Park Ridge—Solander

Land Size 375m<sup>2</sup> House Dimensions - 10.6m x 18.58m



#### Home Includes:

- Façade Pictured Included - Others
- Stone Benchtops Throughout
- Stainless Steel Appliances
- Gooseneck tap to kitchen sink
- LED Downlights & Ceiling Fans Throughout
- Carpets & Tiles or Timber Look Vinyl
- Semi Frameless Shower Screens
- Letterbox & Clothesline
- Colorbond Roof,
- Exposed Aggregate Driveway, Porch and Alfresco, letter box and clothes line
- Full NBN Provisions
- Personalised Colour Consultation
- H1 Slab and piers (fixed price)
- Logan City Council Fees
- Four bedroom, study, DLUG, large alfresco
- Unlimited changes to the plan! If you can dream it, we can build it!

**House Price: \$187 276.00**

**Land Price: \$209 000.00**

#### FLOOR AREA

Living	120.91 <sup>2</sup>
Garage	35.24m <sup>2</sup>
Alfresco	18.58m <sup>2</sup>
Porch	2.63m <sup>2</sup>
<b>Total</b>	<b>177.36m<sup>2</sup></b>

