



House & Land Package from

**\$452,860\***

**Beachlands 187**



**Lot 226 Niels Crescent, Park Ridge - Solander**

**Land Size: 421m<sup>2</sup> Floor Area: 187m<sup>2</sup>**

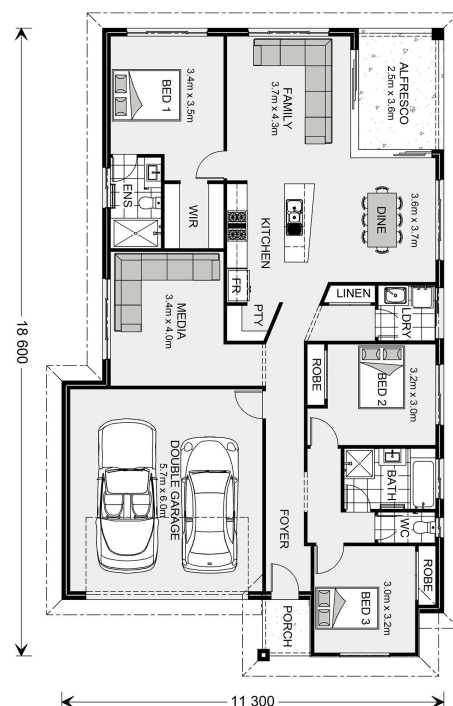
- + Facade as shown
- + Choice of Colorbond Roof or Flat profile roof tile
- + H1 slab
- + Floor Coverings
- + 2590mm ceiling heights
- + Exposed agg driveway
- + Letterbox & clothesline

- + Multiple LED downlights
- + Multiple double power points
- + Custom cabinetry with Soft close doors & drawers throughout
- + 20mm stone benchtop to kitchen & bathrooms
- + Stainless steel appliances and dishwasher

**Call Hayley Somerfield 0432 114 051**

**Display Home: 34 Bronzewing Circuit, Bahrs Scrub**

Open: Daily, 10am - 5pm.



\*DISCLAIMER: Images and photographs may depict fixtures, finishes and features either not supplied by G.J. Gardner Homes or not included in any price stated. For detailed home pricing or to discuss our building time program please talk to a New Homes Consultant. QBCC: 1121765 \*Including GST