

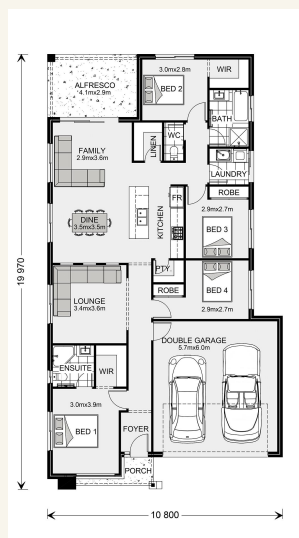


House and land package from \$433,300*

Address: 290 Neils Crescent , 'Solander Estate' Park Ridge

Inclusions:

- + Open Plan Living
- + Media Room
- + Barrier Screens & Window Blinds included
- + Alfresco Area
- + Aircon to Main Living
- + Fencing, Landscaping & Driveway included



*Images and photographs may depict fixtures, finishes and features either not supplied by G.J. Gardner Homes or not included in any price stated. These items include furniture, swimming pools, pool decks, fences, landscaping - including planter boxes, retaining walls, water features, pergolas, screens and decorative landscaping items such as fencing and outdoor kitchens and barbeques. For detailed home pricing, please talk to a new homes consultant.

Bridgewater 190 - Element Series

4 2 2

Give us a call or drop in for a chat today.

Office:

Jimboomba

14-20 Magnesium Drive , Crestmead Queensland 4132

QBCC: 15006819

Sharelle Phillips

Sales Consultant

Call: 3803 6380

Email: sharelle.phillips@gjgardner.com.au

Call: 07 3803 6380

Email: jimboomba@gjgardner.com.au

Or visit gjgardner.com.au

Welcome **home.**

G.J. Gardner. HOMES